

LACUL TEI 31 – 33

Exclusive view apartments. Refinement and safety

Apartment No. 14, 4th floor – 2 bedrooms + living room

Address: 31-33 Lacul Tei Boulevard, 2nd District, Bucharest

www.btlreal.ro

This apartment is located on the fourth floor in a new building, designed as an exclusive property in a central area of the city, with easy access to major means of transportation, but also located in an area that offers generous views towards Circus Park and towards the North side (Floreasca, Herastrau), which has all the facilities and sights that you could ever need.

The building has three underground levels to ensure sufficient parking spaces for all apartments. The structure is protected by a drilled secant piles enclosure, with excavation down to -11m below the ground level.

General info: Schindler elevator, Buderus heating system with Weishaupt burner and 40sqm of Logasol - Buderus solar panels, 24/7 reception guards and video surveillance, automatic fire detection and extinguishing, automation for contaminant detection and evacuation for underground parking lots, defrost system for the garage access ramp.

Apartment no 14 is new. It has 80.22 sqm interior net surface and two terraces of 13.05 sqm and 3.85 sqm.

Space configuration:

Living room: 28.63 sqm

Master bedroom: 13.63 sqm

Bedroom: 11.41 sqm

Kitchen: 9.42 sqm

Master bathroom: 3.90 sqm

Bathroom: 3.14 sqm

Living room balcony: 13.05 sqm

Bedroom balcony: 3.85 mp

The apartment is fully furnished and equipped. All rooms are individually equipped with inverter air conditioning.



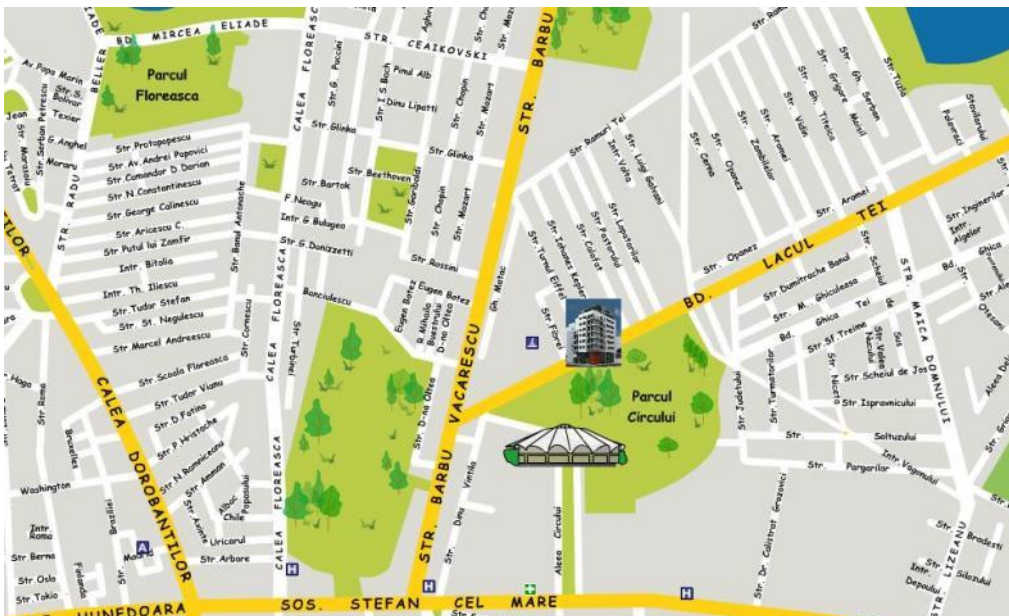
Real

LACUL TEI 31 – 33

Exclusive view apartments. Refinement and safety



Location: 31-33 Lacul Tei Boulevard, 2nd District, Bucharest



Apartment No. 14, 4th floor – 2 bedrooms + living room



IMOBIL LOCUINTE
B-DUL LACUL TEI NR. 31-33, SECTOR 2



PLAN APARTAMENT SUD-VEST
ETAJE 1, 2, 3, 4

PROIECTANT



DEZVOLTATOR



Apartment plan details:

Type	Orientation	Net surface	Balcony surface	Exclusive build area / Total built-up area including common spaces
3 rooms	South - West	80.22 sqm	16.90 sqm	117 / 160 sqm

Pictures:

Exterior view toward Circus Park:



Living room:



Master bedroom:



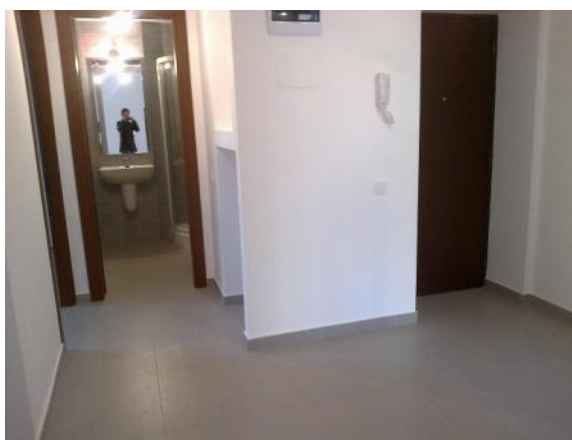
Bedroom:



Kitchen:



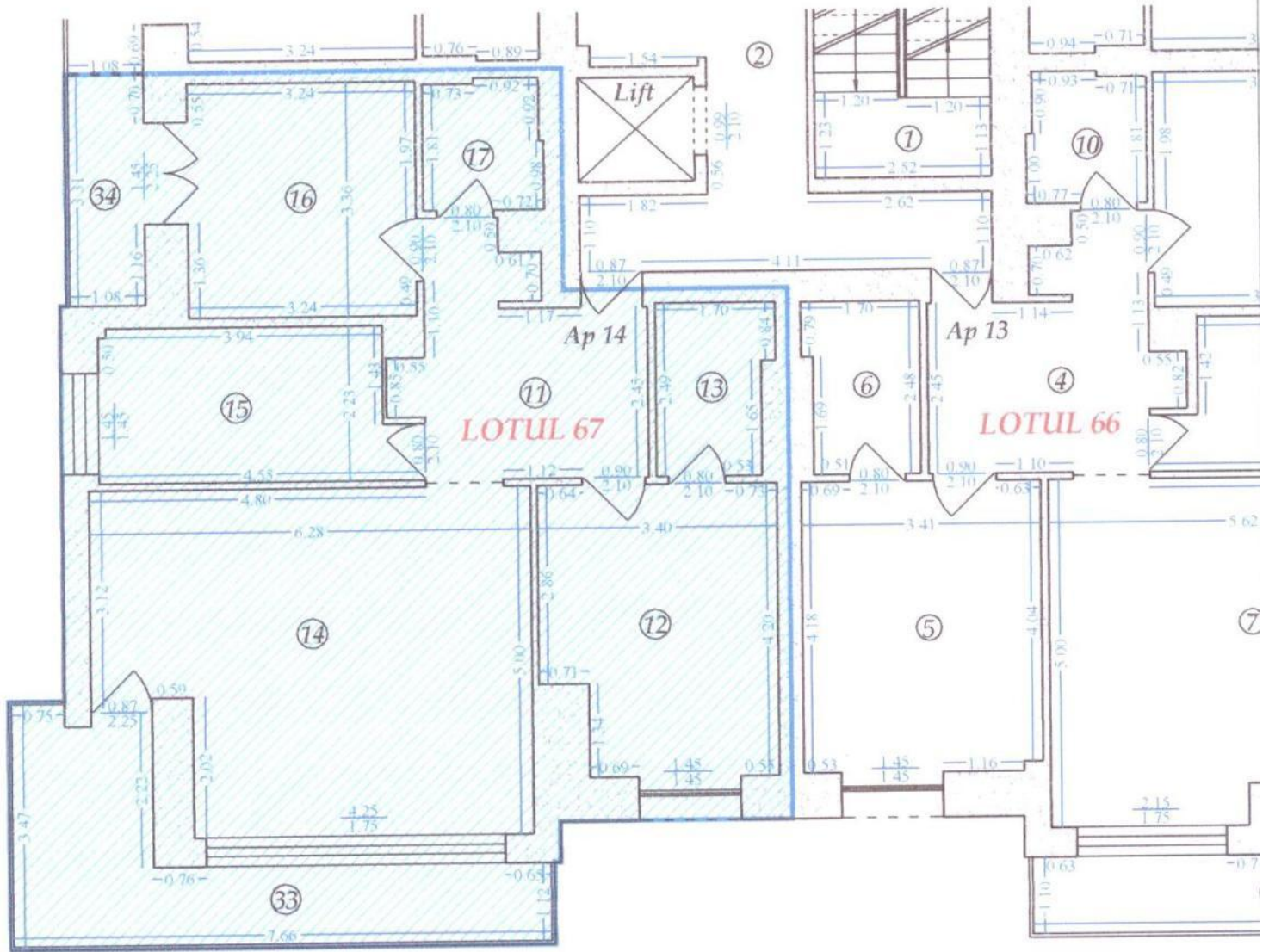
Master bathroom / Bathroom:



RELEVU LOT 67

Scara 1: 100

Numar cadastral al terenului	Suprafata	Adresa imobilului	
16900 / 67		B-DUL. LACUL TEI NR. 31 - 33	
		ET. 4, AP. 14	
Cartea Funciara colectiva nr.		UAT	BUCURESTI - SECTOR 2
Cod unitate individuala (U)		Cartea Funciara individuala	



Numar incapere	Denumire incapere	Suprafata utila (mp)
11	Hol	10.09
12	Camera	13.63
13	Baie	3.90
14	Camera	28.63
15	Bucatarie	9.42
16	Camera	11.41
17	Baie	3.14
	Suprafata utila	80.22
33	Balcon	13.05
34	Balcon	3.85
	Suprafata totala	97.12

Cota indiviza parti comune 2.394 %
 Cota indiviza teren 15.08 mp



Executant, Ing. Preda - Raiciu Emilia aut.: RO-B-F nr. 0909	Data Dec. 2010
Receptionat, Oficiul de Cadastru și Publicitate Imobiliară BUCURESTI IONESCU ELENA Inspecor de cadastru	Data 264

Finishings:

- 24/7 video surveillance;
- Defrost system for the garage access ramp;
- Access to underground parking with traffic lights;
- Hot air curtains at the entrance to the garage;
- MCA garage door with automatic entry barrier - infrared detector;
- Automatic fire detection and extinguishing;
- Automation for contaminant detection and evacuation for underground parking lots;
- Basements are completely waterproof – *Xypex*;
- *Schindler* elevator - stainless Steel finishings, for 7 people. Stations start at the 3rd basement level. In case of energy breakdown the cabin stops on first floor;
- Granite plated staircase and common areas;
- Stainless steel handrail on the staircase;
- *Maco* apartment entrance doors with acoustic and thermal insulation; maximum locking security;
- *Pinum* veneered interior doors;
- Kitchens are equipped with:
 - Gas sensors with solenoid valve against gas loss;
 - 380 V Supply - for electric hob and oven;
- Ceramic tiles for bathroom and kitchen, *Marazzi* and *Trial* – Italy;
- Complete fitting hanging sanitary and suport frames – *Roca* and *Geberit*;
- Bathrooms are provided with electrical circuit that can supply jacuzzi bathtubs;
- 8mm *Kronotex* flooring / AC4 strength, German manufacturing;
- Air conditioning in all rooms - *Acson* inverter / Malaysia
- *Panelli* - Italy steel radiators, thermostatic heads and ornamental stainless steel rod;
- The apartments are equipped with sockets for internet, telephone and TV in all rooms;
- All walls are painted with *Savana* white paint;
- *Vimar* – Italy, electrical switchgear
- *Alumil M9650* aluminium joinery equipped with insulating safety glass;
- Aluminum exterior sills;
- 8 cm thermal system, structured paint or clinker;
- Porcelain outdoor floor tiles – antifreeze;
- Rectangular satin brushed stainless steel handrail, fitted with safety glass – duplex;
- *Buderus* boiler heating system and *Weishaupt* burner;
- 40 sqm of *Logasol* - *Buderus* solar panels;
- All apartments are equipped with individual metering for each type of consumer;
- Class A Energy Performance Certificate.

CONTACT for this property - Direct sales department - developer
(+4) 0729 867 320 - (+4) 021 250 40 30 - office@btlreal.ro - www.btlreal.ro